



TK International
020 7794 8700
www.t-k.co.uk

Residential Sales
Residential Lettings
Property Management

Sales Office:
9 Heath Street
Hampstead
London NW3 6TP
E: sales@t-k.co.uk

Lettings Office:
16-18 Heath Street
Hampstead
London NW3 6TE
E: lettings@t-k.co.uk

tk.international
TK International
TK International



Lindfield Gardens Hampstead NW3

A delightful three bedroom penthouse apartment, situated on the fourth and fifth floors of this attractive modern development with the benefit of direct lift access.

This well-proportioned apartment boasts a fifth floor 39' reception room with access to a roof terrace with far reaching views towards the city. The fourth floor enjoys a fitted kitchen/breakfast room with balcony, 22' dining room and three bedrooms each with en suite bathrooms.

This fine apartment further benefits from secure off street parking for one car behind an automatic gate.

Located within close proximity to Hampstead Village (Northern Line) as well as the wide choice of shopping and transport facilities on Finchley Road (Jubilee & Metropolitan Lines).

EPC Rating D

£7,150 Per Month

SOLE AGENT

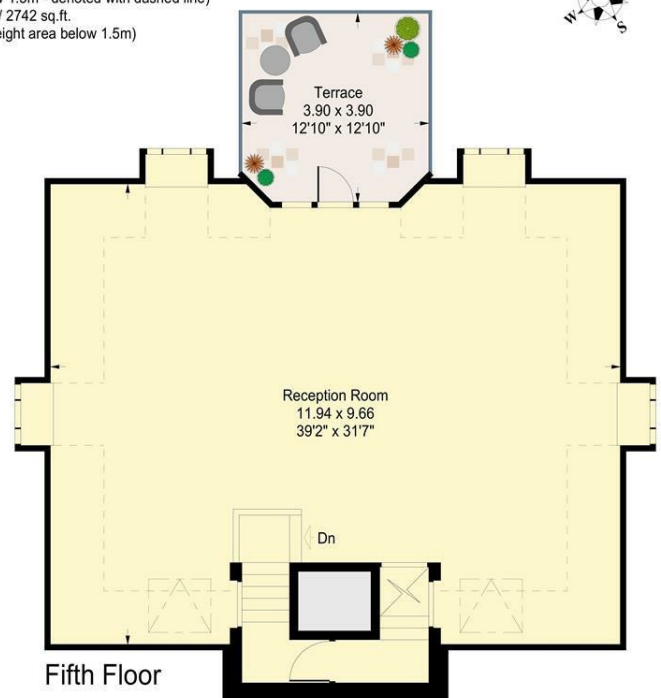






Lindfield Gardens, London NW3

Approximate Gross Internal Area:
 284.7 sq.mts. / 3065 sq.ft.
 (including reduced height area, below 1.5m - denoted with dashed line)
 254.7 sq.mts. / 2742 sq.ft.
 (not including reduced height area below 1.5m)



Fourth Floor

Fifth Floor

APPROX. SCALE
 0 1 2 3 4 5 10Ft
 0 1 2 3M

Floor Plans produced by
Pro plan
 01491 842925

All measurements and figures are taken
 in accordance with RICS guidelines.
 This plan is for guidance only and must
 not be relied upon as a statement of fact.